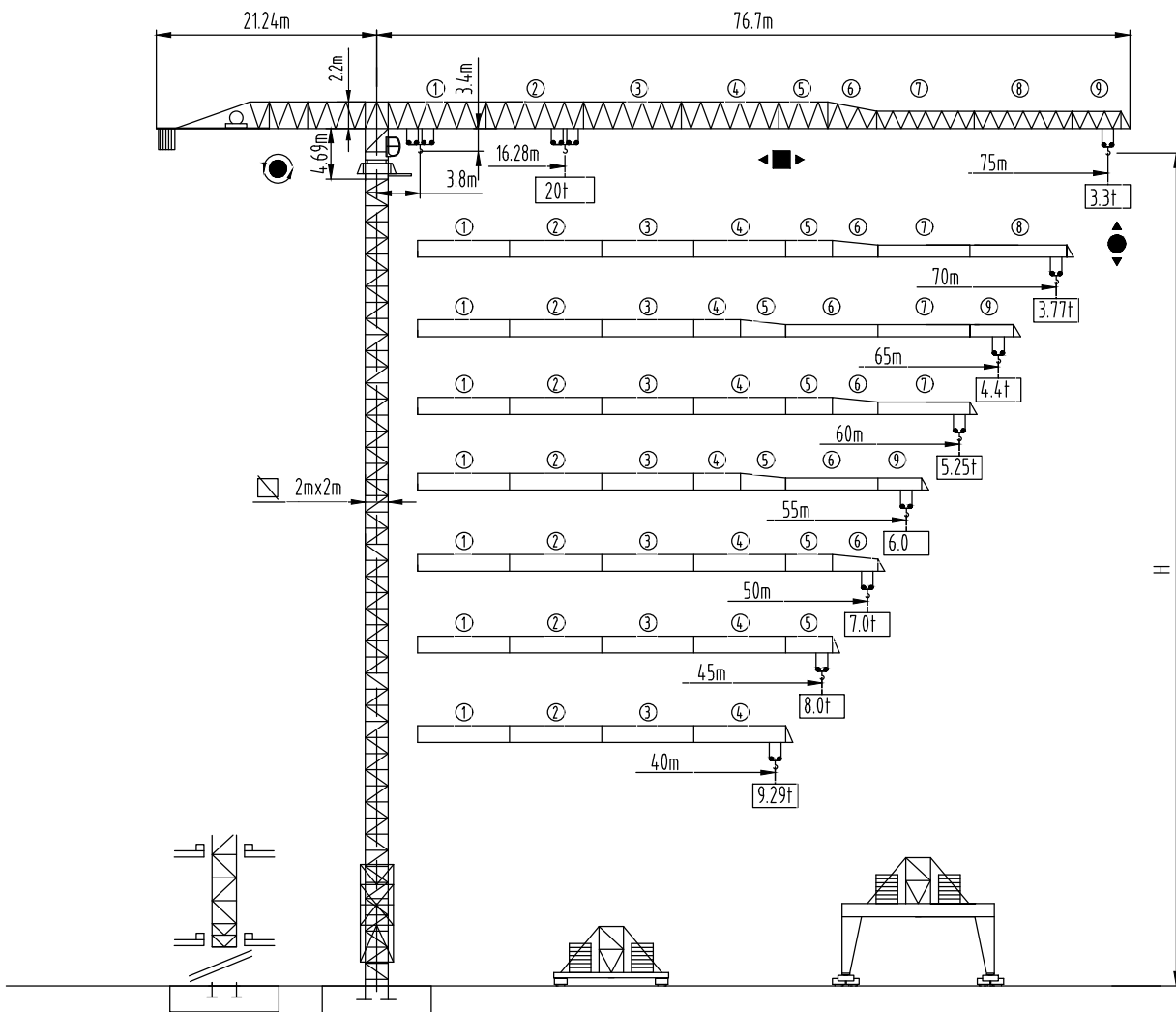




沈阳三洋建筑机械有限公司  
SHENYANG SANYO BUILDING MACHINERY CO., LTD

Max Load: 20Ton  
Jib: 75M  
Tip Load: 3.3Ton  
Free Standing: 60.24M

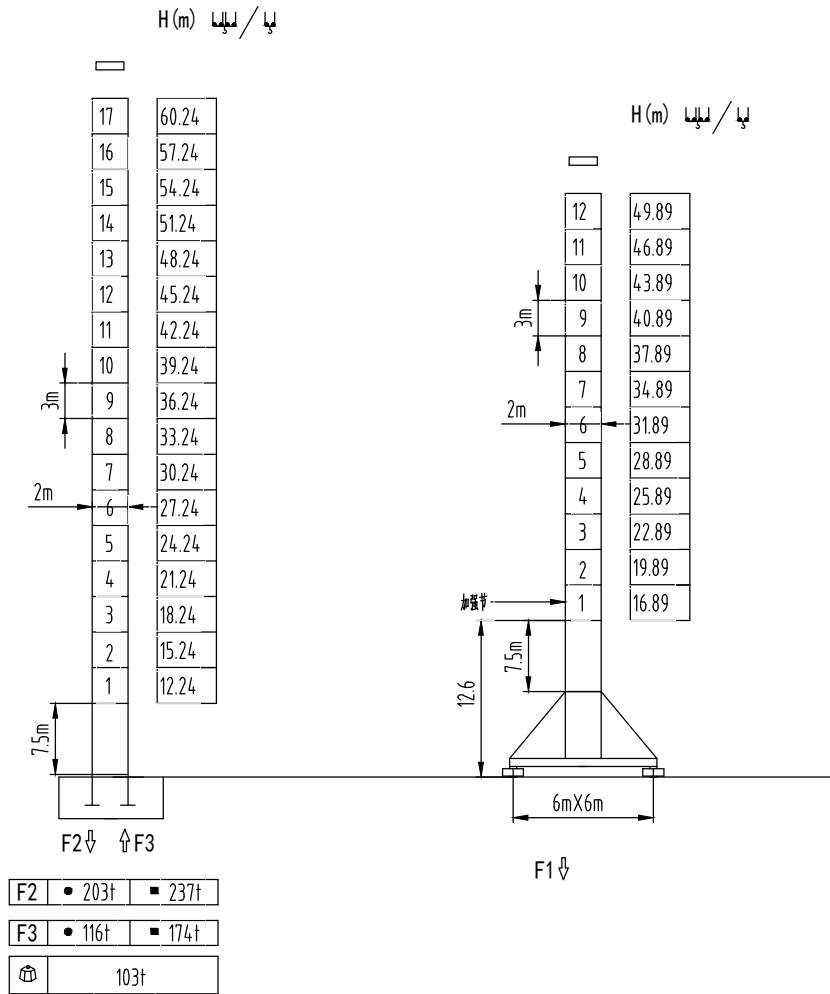
TOWER CRANE QTP 350t · m  
(R75/33)





塔身截面 L69B2 Mast □ 2mx2m

40-75m

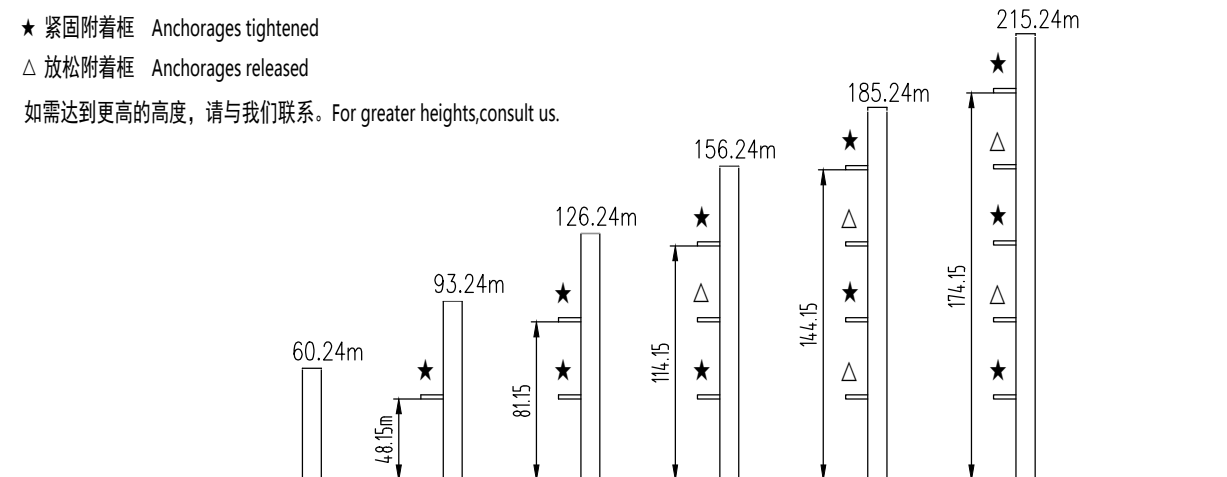


固定式附着高度 Anchoring height of stationary crane

★ 紧固附着框 Anchorages tightened

△ 放松附着框 Anchorages released

如需达到更高的高度，请与我们联系。For greater heights, consult us.



载荷特性 Load diagrams

75m	3.8-	16.28	20	25	29.01	35	40	45	50	55	60	65	70	75	m
	⚡	20	15.68	12.0	10	7.88	6.62	5.64	4.86	4.23	3.71	3.26	2.88	2.46	t
	3.8-				31.12	35	40	45	50	55	60	65	70	75	m
	⚡				10	8.72	7.46	6.48	5.70	5.07	4.55	4.10	3.72	3.30	t

70m	3.8-	16.41	20	25	29.25	35	40	45	50	55	60	65	70	m
	⚡	20	15.83	12.12	10	7.97	6.69	5.71	4.92	4.29	3.76	3.31	2.93	t
	3.8-				31.38	35	40	45	50	55	60	65	70	m
	⚡				10	8.81	7.53	6.55	5.76	5.13	4.60	4.15	3.77	t

65m	3.8-	17.13	20	25	30.57	35	40	45	50	55	60	65	m
	⚡	20	16.67	12.78	10	8.44	7.10	6.07	5.25	4.58	4.02	3.56	t
	3.8-				32.8	35	40	45	50	55	60	65	m
	⚡				10	9.28	7.94	6.91	6.09	5.42	4.86	4.40	t

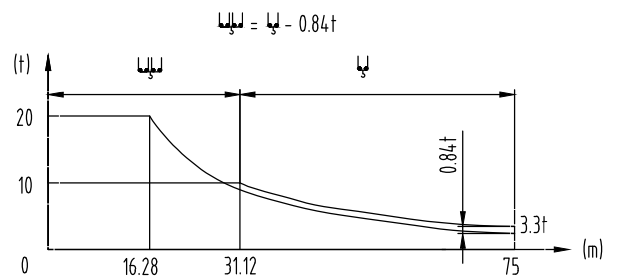
60m	3.8-	18.15	20	25	32.45	35	40	45	50	55	60	m
	⚡	20	17.86	13.72	10	9.31	7.68	6.58	5.71	5.00	4.41	t
	3.8-				34.82	35	40	45	50	55	60	m
	⚡				10	9.94	8.52	7.42	6.55	5.84	5.25	t

55m	3.8-	18.55	20	25	30	33.17	40	45	50	55	m
	⚡	20	18.31	14.08	11.31	10	7.90	6.78	5.88	5.16	t
	3.8-					35.6	40	45	50	55	m
	⚡					10	8.74	7.62	6.72	6.0	t

50m	3.8-	19.15	20	25	30	34.29	40	45	50	m
	⚡	20	19.01	14.63	11.77	10	8.24	7.08	6.16	t
	3.8-					36.8	40	45	50	m
	⚡					10	9.08	7.92	7.0	t

45m	3.8-	19.3	20	25	30	34.57	40	45	m
	⚡	20	19.19	14.77	11.88	10	8.33	7.16	t
	3.8-					37.1	40.6	45	m
	⚡					10	9.17	8.0	t

40m	3.8-	19.52	20	25	30	34.95	40	m
	⚡	20	19.43	14.97	12.04	10	8.45	t
	3.8-					37.51	40	m
	⚡					10	9.29	t



⚡ / ⚡ 标准小车可使用 2/4倍率绳 standard trolley 2/4 fall.

使用四倍率时, 应从二倍率的载荷中减去0.84吨

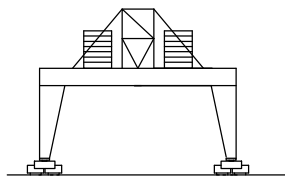
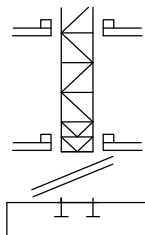
When using ⚡ subtract 0.84t from the loads ⚡

机构特性 Mechanisms specification															Kw
起升 Hoisting		90LVF	m/min	0-5.4	0-22.2	0-45	0-67.5	0-90	0-2.7	0-11.2	0-22.5	0-33.7	0-45	600	90
			t	10	10	10	5	2.5	20	20	20	10	5		
变幅 Trolleying		11TVF	m/min	0-65											7.5
回转 Slewing		9SVF	r/min	0-0.8											9x3
		145SVT		145Nm x 3											
行走 Travelling		5.5TRVF	m/min	0-15											5.5x4
电源		Power Supply		380V 50Hz / 440V 60Hz											
KVA 供电容量		Necessary Electric Power		150KVA											

平衡臂配重  
Counter-jib ballast

		(t)
75m	21.24m	
70m	21.24m	
65m	21.24m	
60m	21.24m	
55m	21.24m	
50m	21.24m	
45m	21.24m	
40m	21.24m	

可变换的其它安装方式  
Mounting possibilities



同我们协商  
Consult us

F 反力  
Reactions

- 工作状态 In service
- 非工作状态 Out of service

自重  
Self-load

不带载荷及配重，最大臂长及标准高度时的自重。  
Without load and counter-weight with longest jib and standard height